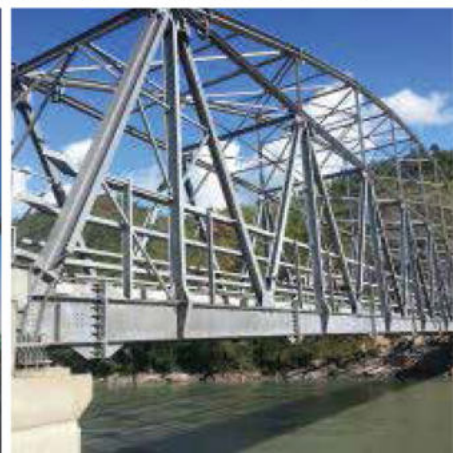
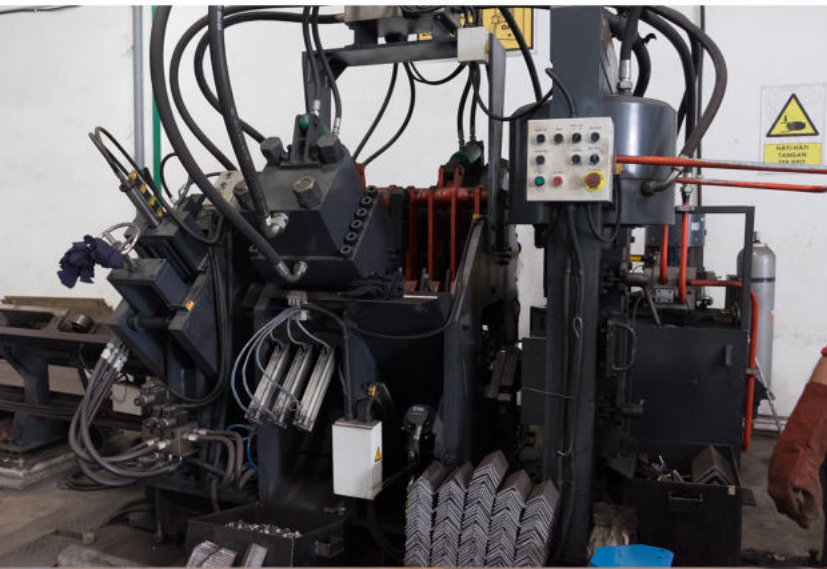




## COMPANY PROFILE













# TABLE OF CONTENT

<b>1</b>	<i>Who We Are</i>
<b>2</b>	<i>Director's Word</i>
<b>3</b>	<i>Roadmap History</i>
<b>4</b>	<i>Vision and Mission</i>
<b>5</b>	<i>Company Value</i>
<b>6</b>	<i>HSE Policy</i>
<b>7</b>	<i>Our Commitment</i>
<b>8</b>	<i>Organization Chart</i>
<b>10</b>	<i>Business License</i>
<b>12</b>	<i>Certification</i>
<b>13</b>	<i>Engineering</i>
<b>14</b>	<i>Facilities and Machinery</i>
<b>22</b>	<i>Product and Services</i>
<b>25</b>	<i>Quality Control</i>
<b>27</b>	<i>Supporting Facilities and Major Partners</i>
<b>30</b>	<i>Project Documentation</i>
<b>33</b>	<i>Client and Project Owner- end User</i>



# WHO WE ARE



**PT. ANUGERAH PERKASA KONSTRUKSI PLUS (APK+)** is National Private Company established since July 2018 and located in SIDOARJO, East Java (East Ring Road - Industrial Complex) which is located approximately +/- 10 KM from Toll Road Access in Surabaya - Waru Gate Entrance, and +/- 12 KM from Juanda Airport.

APK+ having specialist on Light to Medium Steel Structure Manufacturer (Fabricator), Structural & Mechanical Engineering Services, Mechanical & Electrical Works and Construction Services which have size of medium scale level of business according to Construction Services development Board of Indonesia (LPJK - Lembaga Pengembangan Jasa Konstruksi).

Kind of project as **Core Competency** of the company are:

**1. Electricity Infrastructures :**

- Transmission Line Tower 70KV-150KV-275KV-500KV,
- Conventional-GIS-GIL Substation Steel Structures 70KV-150KV-275KV-500KV
- Power Plant Infrastructures - Steel Structure Buildings (Structural Power House & Turbine generator. (including balance of plant steel structure)

**2. Buildings, Warehouses, Workshop Buildings, Coal Shelter Building, Boiler Chimney & Stack Structure, Gallery Conveyor Structure, Equipment Support Structures)**

**3. Renewable Energy Infrastructures** - Solar Panel Frame Support Structure (Greenfield & Roof Top), Wind Speed & Direction Measurement Sensor Tower for Wind Turbine Power Plant

**4. Telecommunication Infrastructures** - Steel Pole & Tower (Greenfield & Roof Top)

**5. Navigation Infrastructures** - Steel Poles & Tower (Onshore & Offshore)

**6. Marine Port Supporting Infrastructures** - Fender Frontal Frame, Galvanized Bridge Jetty.

**7. Public Transportation Infrastructures** - Steel Bridge (Girder & Truss Bridge), Aircraft Hangar Steel Structure, Airport Building Steel Structure, Bus Terminal Steel Structure, Train Terminal Steel Structure, Toll Road Structure Facilities

**8. Industrial Building Infrastructures** - Production Building Facilities, Warehouse Buildings

**9. Public Facility Infrastructures** - All kind of Stadium Buildings, Amusement Building

APK+ having affiliate group company - **PT. ANUGERAH PERKASA ABADI JAYA** a private National company established since year 2015. **PT. ANUGERAH PERKASA ABADI JAYA (APAJ)** also located in **Sidoarjo**, East Java (East Ring Road - Industrial and Warehousing Complex) which have size of medium scale level of business as well.

In the year of 2019 and 2020, APK+ and APAJ awarded by ISO certification issued by **BRITISH INSTITUTION STANDARD (BSI) Group INDONESIA**

- APK+ is certified for **ISO 9001:2015, ISO 14001:2015 and ISO 45001:2018**
- APAJ is certified for **ISO 9001:2015, ISO 14001:2015 and ISO 45001:2018**

# DIRECTOR'S WORD



“

*Never settle to keep innovating new technology from global industry demand in energy, infrastructure, industrial, and mining material processing industry.*

”

*Dear valuable customers and partners*

It is our pleasure to introduce ourselves as your preferred partner in your business need. With our ability to adapt in years since our company established, with our company value, mission and vision, thanks to God and every supporting partners and associates who made it happen and kept our perseverance in growing.

As our mission, we will never settle in improving our products and services quality with the deployment of new CNC machine in our angle line production at our new workshops by fourth quarter of this year 2019 and recruiting additional engineering team to make stronger team as a cornerstone in preparation to enter EPC projects and during period of year 2019 and 2020, we thank to the British Standard Institution through PT. BSI Indonesia who was done on assessment and put trust to our company by issuing *ISO 9001:2015*, *ISO 14001:2015* and *ISO 45001:2018* certification to us.

We are also improving our engineering expertise by establishing partnerships with local technical universities and material/product manufacturers to acquire every update on new technologies which would potentially increase our quality, efficiency and productivity. With mostly energetic smart young expert engineers and staffs involved in our projects, production and all line supporting teamworks we dedicate ourselves to every project that are entrusted by our clients to deliver plus points above standard in every result as our goal. We hope APK+ can contribute in your successes.



Your sincerely,

**Hardi Joewono**  
Director / Chairman



## 2020

- Gained trust as Fabricator Vendor for PT Daya Mitra Telekomunikasi (Mitratel), Subsidiary company of PT. Telkomsel Indonesia.

## 2019

- Obtaining for 275kv and 500kv substation. Steel structure and 150kv T/L for Open Book PLN Pusat Supply Chain Management under contract from ABB.
- Navigation Tower Project for Kementerian Perhubungan Direktorat Jendral Perhubungan Laut.
- Setup first CNC machine (Angle LINE CNC).
- Gained a trust as fabrication vendor from ABB and Siemens.

## 2018

- Got project produce port facility - frontal frame for 2 posts at Nusa Tenggara Barat (NTB) from PT ASDP Indonesia Ferry as initial frontal frame in public transportation facilities.
- Got initial full extension 70kv and 150kv substation steel structure project - post and beam gantry and HV equipment support for PLN UIP Kalimantan and PLN UIP Sulawesi.

## 2020

- Certified for ISO 45001: 2018 from BSI.
- Gained Credit Fund Facility from Bank for execution some major project and operational expansion business.
- Obtaining Tower Supply for PLN 150kv for incomer SUTT.

## 2019

- Certified for ISO 9001: 2015 from BSI.
- Certified ISO 14001: 2015 from BSI.
- At the end of 2019 opened a new workshop of Sinar Buduran 3. Kav A46-47
- Bridge Rehabilitation Project including : Design and Instalation supervision from Satker Pekerjaan Umum (PU) Nusa Tenggara Timur (NTT), Truss Bridge 40m & Truss Bridge 55m.

## 2018

- APK was founded in July 2018.
- The initial project of APK is the production of steel substation structures using hydraulic iron works machines.

# VISION



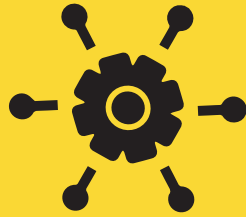
- 1** To become a national start-up EPC company that combines manufacturing capabilities in a single roof package solution to meet ever-increasing project needs and demands.
- 2** To explore new possibilities with optimized designs involving new emerging technologies in renewable energy.

# MISSION

- 1** Never settle in improving quality standard of design and technical specifications for every project execution to deliver the best products and services to customers.
- 2** Keep innovating new technologies from global demands in energy, infrastructure, industrial, and mining processing industries.



# COMPANY VALUE



## TRUSTED TEAMWORK

Colaborating in the most effective and efficient way to achieve our goals.



## INTEGRITY

To uphold honesty, truthfulness, and show uncompromising abherence to strong morale values and ethical principals.



## SERVICE ORIENTED

Anticipate and identify customer meet to bring the most satisfactory results.



## ETHICAL BUSINESS RELATIONSHIP

To treat business partner as equal with utmost respect.



## PRECISION IN EVERY RESULT

Accuracy and accountability in all aspect of work.



## CONTINUES IMPROVEMENT

Constantly better ourselves to go beyond the best possible.



## QUALITY

Always perform above expectation.



## TRUSTWORTHINESS

Validated with internationally recognise standart.

# HEALTH, SAFETY, AND ENVIRONMENT



We are committed to a HSE management system as a high priority to achieve continual improvement in regards to work related HSE with :

- 1** Identifying and eliminating hazards and potential hazards to the safety, health and environment.
- 2** Creating an environment of teamwork and increase system awareness to all employees
- 3** Prevent and minimize environmental pollution.
- 4** Protecting and maintaining to the health and safety of all stakeholders and employees in all area of operation.
- 5** Minimizing energy of usage through efficient and effective energy management.
- 6** Complying with all relevant laws and regulation and applying the best industrial practices.





# OUR COMMITMENT



We are committed to fulfil our vision and mission by actively and continuously improving



## Quality

Striving for high quality operations to deliver products and services beyond international standards.



## Human Resources

Foster a culture of continous learning and improvement throughout the company.



## Corporate Social

to responsibility contribute positively to the nation's economic and community services.



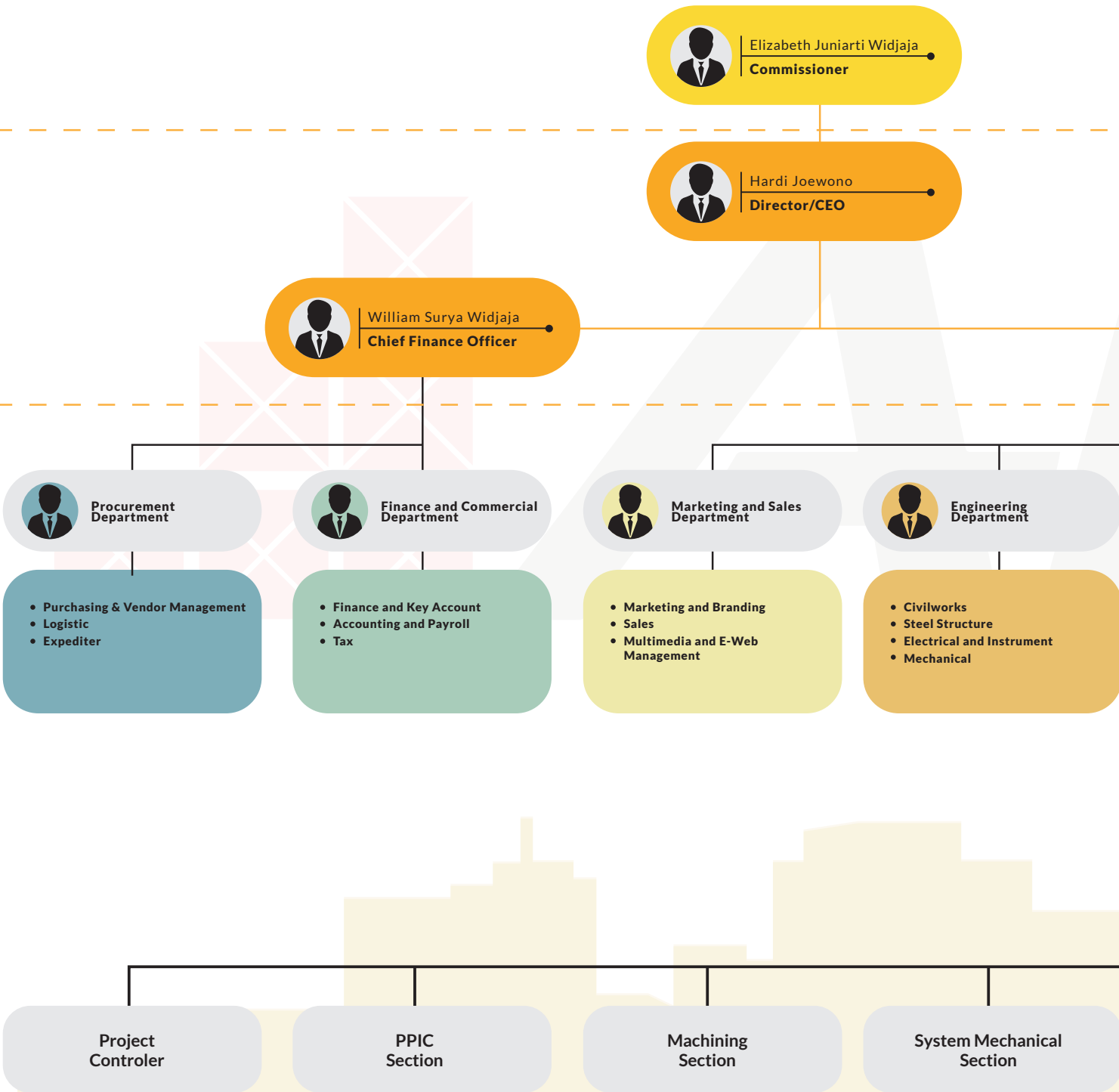
## Customer Satisfaction

Strive to exceed customer expectations and achieve maximum customer satisfaction.

# ORGANIZATION CHART

## SHAREHOLDERS

Elizabeth Juniarti Widjaja      Hardi Joewono      William Surya Widjaja





## BOARD OF COMMISSIONER

## BOARD OF DIRECTOR



Stephanus Widjaja  
Chief Operating Officer

## MANAGEMENT



Manufacturing and  
Project Department

- Manufacturing
- Project



HSE Department

- Health, Safety, Environment
- ISO Document Controller



HR and GA  
Department



Manufacturing and  
Project Department

Installation and  
Construction  
Section

QC  
Section

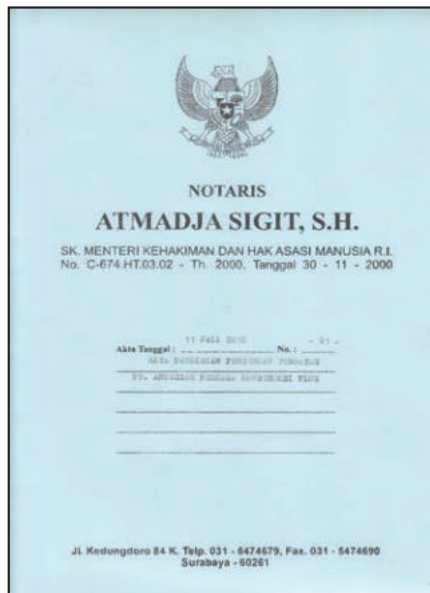
Paint Coating &  
Surface Treatment  
Section

Logistic, Setting, Packing,  
Finish Product Warehouse  
Section

# BUSINESS LICENCES



Here are PT APK+ business licences :



Akta Notaris



Pengesahan Pendirian PT



Surat Domisili Usaha



Nomer Induk Usaha



**PEMERINTAH REPUBLIK INDONESIA**  
**IZIN LOKASI**

Pemerintah Republik Indonesia c.q. Lembaga Pengelola dan Penyelenggara OSS berdasarkan ketentuan Pasal 12 ayat (2) Peraturan Pemerintah Nomor 24 Tahun 2019 tentang Pelayanan Perizinan Berusaha Terintegrasi Secara Elektronik, menerbitkan Izin Lokasi sebagai:

Nama Perusahaan : PT ANUGERAH PERKASA KONSTRUKSI PLUS  
Nomor Induk Berusaha : 8120001920799  
Lokasi Tetap Dirección :  
- Alamat : Pergudangan Platinum, Jl. Lingkar Timur Blok C No. 9 RT. 14 RW 04  
- Desa/Kelurahan : Buduran  
- Kecamatan : Klaten  
- Kabupaten/Kota : Kab. Sukoharjo  
- Provinsi : Jawa Tengah  
- Lantai Lahan : 375 m<sup>2</sup>  
- Rencana Ruang :  
- Koordinat : 4.49026, 107.59333

Kesimpulan izin lokasi terdapat sesuai ketentuan perundang-undangan dan berlaku efektif.

Dikeluarkan tanggal : 9 September 2018



Dokumen ini dikeluarkan dari Sistem OSS atas dasar data dari pelaku usaha. Dokumen dan labelnya atas data yang diunggulkan dalam dokumen ini dan data yang tertera dalam Sistem OSS menjadi tanggung jawab pelaku usaha sepenuhnya.

Surat Izin Usaha Perdagangan

**PEMERINTAH REPUBLIK INDONESIA**  
**IZIN USAHA**  
(Surat Izin Usaha Perdagangan)

Pemerintah Republik Indonesia c.q. Lembaga Pengelola dan Penyelenggara OSS berdasarkan ketentuan Pasal 12 ayat (1) Peraturan Pemerintah Nomor 24 Tahun 2019 tentang Pelayanan Perizinan Berusaha Terintegrasi Secara Elektronik, menerbitkan Izin Usaha berupa Izin Usaha Perdagangan sebagai:

Nama Perusahaan : PT ANUGERAH PERKASA KONSTRUKSI PLUS  
Nomor Induk Berusaha : 8120001920799  
Alamat Perusahaan : Pergudangan Platinum, Jl. Lingkar Timur Blok C No. 9  
Nama KBL : PERDAGANGAN ECRAN PERALATAN LISTRIK, BAHAN TANGGA DAN PERALATAN PENGERANGAN DAN PERUNGKAPANNYA  
Kode KBL : 4790  
Ruang / Jasa Dagangan Utama : Perdagangan Mekanikal dan Elektronik, Jasa Peralatan dan Konstruksi Struktur Baja, Mekanikal dan Elektronik  
Lokasi Usaha :  
- Alamat : Pergudangan Platinum, Jl. Lingkar Timur Blok C No. 9 RT. 14 RW 04  
- Desa/Kelurahan : Buduran  
- Kecamatan : Klaten  
- Kabupaten/Kota : Kab. Sukoharjo  
- Provinsi : Jawa Tengah

Izin Usaha ini telah terdapat sesuai ketentuan perundang-undangan dan berlaku efektif.

Dikeluarkan tanggal : 9 September 2018



Dokumen ini dikeluarkan dari Sistem OSS atas dasar data dari pelaku usaha. Dokumen dan labelnya atas data yang diunggulkan dalam dokumen ini dan data yang tertera dalam Sistem OSS menjadi tanggung jawab pelaku usaha sepenuhnya.

Surat Izin Usaha Jasa Konstruksi

**PEMERINTAH REPUBLIK INDONESIA**  
**IZIN USAHA**  
(Izin Usaha Jasa Konstruksi)

Pemerintah Republik Indonesia c.q. Lembaga Pengelola dan Penyelenggara OSS berdasarkan ketentuan Pasal 12 ayat (1) Peraturan Pemerintah Nomor 24 Tahun 2019 tentang Pelayanan Perizinan Berusaha Terintegrasi Secara Elektronik, menerbitkan Izin Usaha berupa Izin Usaha Jasa Konstruksi sebagai:

Nama Perusahaan : PT ANUGERAH PERKASA KONSTRUKSI PLUS  
Nomor Induk Berusaha : 8120001920799  
Alamat Perusahaan : Pergudangan Platinum, Jl. Lingkar Timur Blok C No. 9  
Nama KBL : PEMASANGAN BANGUNAN PREFABRIKASI UNTUK GEOTEK, KONSTRUKSI BANGUNAN ELEKTRIKAL, KONSTRUKSI JARINGAN ELEKTRIKAL, DAN TELEKOMUNIKASI LAINNYA, PEMASANGAN BANGUNAN PREFABRIKASI UNTUK KONSTRUKSI JARINGAN SALURAN IRIGASI, KOMUNIKASI DAN LAINNYA, PEMASANGAN BANGUNAN PREFABRIKASI UNTUK KONSTRUKSI BANGUNAN SIPR LAINNYA  
Kode KBL : 41020, 42213, 42219, 42220, 42920  
Lokasi Usaha :  
- Alamat : Pergudangan Platinum, Jl. Lingkar Timur Blok C No. 9 RT. 14 RW 04  
- Desa/Kelurahan : Buduran  
- Kecamatan : Klaten  
- Kabupaten/Kota : Kab. Sukoharjo  
- Provinsi : Jawa Tengah

Izin Usaha berupa Izin Usaha Jasa Konstruksi ini berlaku efektif setelah perusahaan yang bersangkutan telah melakukan komitmen pemenuhan dan komitmen sesuai prasyarat izin usaha ini dan melakukan pembayaran Pemertan Negara Bukan Pajak atau Pajak Daerah/Retribusi Daerah sesuai ketentuan peraturan perundang-undangan.

Dikeluarkan tanggal : 9 September 2018



Dokumen ini dikeluarkan dari Sistem OSS atas dasar data dari pelaku usaha. Dokumen dan labelnya atas data yang diunggulkan dalam dokumen ini dan data yang tertera dalam Sistem OSS menjadi tanggung jawab pelaku usaha sepenuhnya.

Surat Izin Lokasi

**KEMENTERIAN KEUANGAN REPUBLIK INDONESIA**  
**DIREKTORAT JENDERAL PAJAK**  
**KANTOR WILAYAH CUP JAWA TIMUR 5**  
KPP PRATAMA SIDOARJO UTARA  
Jl. Raya Jember 13, Sidoarjo  
Telp. (031) 8311111, 8311112, 8311113, 8311114, 8311115, 8311116, 8311117, 8311118, 8311119, 8311120, 8311121, 8311122, 8311123, 8311124, 8311125, 8311126, 8311127, 8311128, 8311129, 8311130, 8311131, 8311132, 8311133, 8311134, 8311135, 8311136, 8311137, 8311138, 8311139, 8311140, 8311141, 8311142, 8311143, 8311144, 8311145, 8311146, 8311147, 8311148, 8311149, 8311150, 8311151, 8311152, 8311153, 8311154, 8311155, 8311156, 8311157, 8311158, 8311159, 8311160, 8311161, 8311162, 8311163, 8311164, 8311165, 8311166, 8311167, 8311168, 8311169, 8311170, 8311171, 8311172, 8311173, 8311174, 8311175, 8311176, 8311177, 8311178, 8311179, 8311180, 8311181, 8311182, 8311183, 8311184, 8311185, 8311186, 8311187, 8311188, 8311189, 8311190, 8311191, 8311192, 8311193, 8311194, 8311195, 8311196, 8311197, 8311198, 8311199, 8311200, 8311201, 8311202, 8311203, 8311204, 8311205, 8311206, 8311207, 8311208, 8311209, 8311210, 8311211, 8311212, 8311213, 8311214, 8311215, 8311216, 8311217, 8311218, 8311219, 8311220, 8311221, 8311222, 8311223, 8311224, 8311225, 8311226, 8311227, 8311228, 8311229, 8311230, 8311231, 8311232, 8311233, 8311234, 8311235, 8311236, 8311237, 8311238, 8311239, 8311240, 8311241, 8311242, 8311243, 8311244, 8311245, 8311246, 8311247, 8311248, 8311249, 8311250, 8311251, 8311252, 8311253, 8311254, 8311255, 8311256, 8311257, 8311258, 8311259, 8311260, 8311261, 8311262, 8311263, 8311264, 8311265, 8311266, 8311267, 8311268, 8311269, 8311270, 8311271, 8311272, 8311273, 8311274, 8311275, 8311276, 8311277, 8311278, 8311279, 8311280, 8311281, 8311282, 8311283, 8311284, 8311285, 8311286, 8311287, 8311288, 8311289, 8311290, 8311291, 8311292, 8311293, 8311294, 8311295, 8311296, 8311297, 8311298, 8311299, 8311300, 8311301, 8311302, 8311303, 8311304, 8311305, 8311306, 8311307, 8311308, 8311309, 8311310, 8311311, 8311312, 8311313, 8311314, 8311315, 8311316, 8311317, 8311318, 8311319, 8311320, 8311321, 8311322, 8311323, 8311324, 8311325, 8311326, 8311327, 8311328, 8311329, 8311330, 8311331, 8311332, 8311333, 8311334, 8311335, 8311336, 8311337, 8311338, 8311339, 8311340, 8311341, 8311342, 8311343, 8311344, 8311345, 8311346, 8311347, 8311348, 8311349, 8311350, 8311351, 8311352, 8311353, 8311354, 8311355, 8311356, 8311357, 8311358, 8311359, 8311360, 8311361, 8311362, 8311363, 8311364, 8311365, 8311366, 8311367, 8311368, 8311369, 8311370, 8311371, 8311372, 8311373, 8311374, 8311375, 8311376, 8311377, 8311378, 8311379, 8311380, 8311381, 8311382, 8311383, 8311384, 8311385, 8311386, 8311387, 8311388, 8311389, 8311390, 8311391, 8311392, 8311393, 8311394, 8311395, 8311396, 8311397, 8311398, 8311399, 8311400, 8311401, 8311402, 8311403, 8311404, 8311405, 8311406, 8311407, 8311408, 8311409, 8311410, 8311411, 8311412, 8311413, 8311414, 8311415, 8311416, 8311417, 8311418, 8311419, 8311420, 8311421, 8311422, 8311423, 8311424, 8311425, 8311426, 8311427, 8311428, 8311429, 8311430, 8311431, 8311432, 8311433, 8311434, 8311435, 8311436, 8311437, 8311438, 8311439, 8311440, 8311441, 8311442, 8311443, 8311444, 8311445, 8311446, 8311447, 8311448, 8311449, 8311450, 8311451, 8311452, 8311453, 8311454, 8311455, 8311456, 8311457, 8311458, 8311459, 8311460, 8311461, 8311462, 8311463, 8311464, 8311465, 8311466, 8311467, 8311468, 8311469, 8311470, 8311471, 8311472, 8311473, 8311474, 8311475, 8311476, 8311477, 8311478, 8311479, 8311480, 8311481, 8311482, 8311483, 8311484, 8311485, 8311486, 8311487, 8311488, 8311489, 8311490, 8311491, 8311492, 8311493, 8311494, 8311495, 8311496, 8311497, 8311498, 8311499, 8311500, 8311501, 8311502, 8311503, 8311504, 8311505, 8311506, 8311507, 8311508, 8311509, 8311510, 8311511, 8311512, 8311513, 8311514, 8311515, 8311516, 8311517, 8311518, 8311519, 8311520, 8311521, 8311522, 8311523, 8311524, 8311525, 8311526, 8311527, 8311528, 8311529, 8311530, 8311531, 8311532, 8311533, 8311534, 8311535, 8311536, 8311537, 8311538, 8311539, 8311540, 8311541, 8311542, 8311543, 8311544, 8311545, 8311546, 8311547, 8311548, 8311549, 8311550, 8311551, 8311552, 8311553, 8311554, 8311555, 8311556, 8311557, 8311558, 8311559, 8311560, 8311561, 8311562, 8311563, 8311564, 8311565, 8311566, 8311567, 8311568, 8311569, 8311570, 8311571, 8311572, 8311573, 8311574, 8311575, 8311576, 8311577, 8311578, 8311579, 8311580, 8311581, 8311582, 8311583, 8311584, 8311585, 8311586, 8311587, 8311588, 8311589, 8311590, 8311591, 8311592, 8311593, 8311594, 8311595, 8311596, 8311597, 8311598, 8311599, 8311600, 8311601, 8311602, 8311603, 8311604, 8311605, 8311606, 8311607, 8311608, 8311609, 8311610, 8311611, 8311612, 8311613, 8311614, 8311615, 8311616, 8311617, 8311618, 8311619, 8311620, 8311621, 8311622, 8311623, 8311624, 8311625, 8311626, 8311627, 8311628, 8311629, 8311630, 8311631, 8311632, 8311633, 8311634, 8311635, 8311636, 8311637, 8311638, 8311639, 8311640, 8311641, 8311642, 8311643, 8311644, 8311645, 8311646, 8311647, 8311648, 8311649, 8311650, 8311651, 8311652, 8311653, 8311654, 8311655, 8311656, 8311657, 8311658, 8311659, 8311660, 8311661, 8311662, 8311663, 8311664, 8311665, 8311666, 8311667, 8311668, 8311669, 8311670, 8311671, 8311672, 8311673, 8311674, 8311675, 8311676, 8311677, 8311678, 8311679, 8311680, 8311681, 8311682, 8311683, 8311684, 8311685, 8311686, 8311687, 8311688, 8311689, 8311690, 8311691, 8311692, 8311693, 8311694, 8311695, 8311696, 8311697, 8311698, 8311699, 8311700, 8311701, 8311702, 8311703, 8311704, 8311705, 8311706, 8311707, 8311708, 8311709, 8311710, 8311711, 8311712, 8311713, 8311714, 8311715, 8311716, 8311717, 8311718, 8311719, 8311720, 8311721, 8311722, 8311723, 8311724, 8311725, 8311726, 8311727, 8311728, 8311729, 8311730, 8311731, 8311732, 8311733, 8311734, 8311735, 8311736, 8311737, 8311738, 8311739, 8311740, 8311741, 8311742, 8311743, 8311744, 8311745, 8311746, 8311747, 8311748, 8311749, 8311750, 8311751, 8311752, 8311753, 8311754, 8311755, 8311756, 8311757, 8311758, 8311759, 8311760, 8311761, 8311762, 8311763, 8311764, 8311765, 8311766, 8311767, 8311768, 8311769, 8311770, 8311771, 8311772, 8311773, 8311774, 8311775, 8311776, 8311777, 8311778, 8311779, 8311780, 8311781, 8311782, 8311783, 8311784, 8311785, 8311786, 8311787, 8311788, 8311789, 8311790, 8311791, 8311792, 8311793, 8311794, 8311795, 8311796, 8311797, 8311798, 8311799, 8311800, 8311801, 8311802, 8311803, 8311804, 8311805, 8311806, 8311807, 8311808, 8311809, 8311810, 8311811, 8311812, 8311813, 8311814, 8311815, 8311816, 8311817, 8311818, 8311819, 8311820, 8311821, 8311822, 8311823, 8311824, 8311825, 8311826, 8311827, 8311828, 8311829, 8311830, 8311831, 8311832, 8311833, 8311834, 8311835, 8311836, 8311837, 8311838, 8311839, 8311840, 8311841, 8311842, 8311843, 8311844, 8311845, 8311846, 8311847, 8311848, 8311849, 8311850, 8311851, 8311852, 8311853, 8311854, 8311855, 8311856, 8311857, 8311858, 8311859, 8311860, 8311861, 8311862, 8311863, 8311864, 8311865, 8311866, 8311867, 8311868, 8311869, 8311870, 8311871, 8311872, 8311873, 8311874, 8311875, 8311876, 8311877, 8311878, 8311879, 8311880, 8311881, 8311882, 8311883, 8311884, 8311885, 8311886, 8311887, 8311888, 8311889, 8311890, 8311891, 8311892, 8311893, 8311894, 8311895, 8311896, 8311897, 8311898, 8311899, 8311900, 8311901, 8311902, 8311903, 8311904, 8311905, 8311906, 8311907, 8311908, 8311909, 8311910, 8311911, 8311912, 8311913, 8311914, 8311915, 8311916, 8311917, 8311918, 8311919, 8311920, 8311921, 8311922, 8311923, 8311924, 8311925, 8311926, 8311927, 8311928, 8311929, 8311930, 8311931, 8311932, 8311933, 8311934, 8311935, 8311936, 8311937, 8311938, 8311939, 8311940, 8311941, 8311942, 8311943, 8311944, 8311945, 8311946, 8311947, 8311948, 8311949, 8311950, 8311951, 8311952, 8311953, 8311954, 8311955, 8311956, 8311957, 8311958, 8311959, 8311960, 8311961, 8311962, 8311963, 8311964, 8311965, 8311966, 8311967, 8311968, 8311969, 8311970, 8311971, 8311972, 8311973, 8311974, 8311975, 8311976, 8311977, 8311978, 8311979, 8311980, 8311981, 8311982, 8311983, 8311984, 8311985, 8311986, 8311987, 8311988, 8311989, 8311990, 8311991, 8311992, 8311993, 8311994, 8311995, 8311996, 8311997, 8311998, 8311999, 8312000, 8312001, 8312002, 8312003, 8312004, 8312005, 8312006, 8312007, 8312008, 8312009, 8312010, 8312011, 8312012, 8312013, 8312014, 8312015, 8312016, 8312017, 8312018, 8312019, 8312020, 8312021, 8312022, 8312023, 8312024, 8312025, 8312026, 8312027, 8312028, 8312029, 8312030, 8312031, 8312032, 8312033, 8312034, 8312035, 8312036, 8312037, 8312038, 8312039, 8312040, 8312041, 8312042, 8312043, 8312044, 8312045, 8312046, 8312047, 8312048, 8312049, 8312050, 8312051, 8312052, 8312053, 8312054, 8312055, 8312056, 8312057, 8312058, 8312059, 8312060, 8312061, 8312062, 8312063, 8312064, 8312065, 8312066, 8312067, 8312068, 8312069, 8312070, 8312071, 8312072, 8312073, 8312074, 8312075, 8312076, 8312077, 8312078, 8312079, 8312080, 8312081, 8312082, 8312083, 8312084, 8312085, 8312086, 8312087, 8312088, 8312089, 8312090, 8312091, 8312092, 8312093, 8312094, 8312095, 8312096, 8312097, 8312098, 8312099, 8312100, 8312101, 8312102, 8312103, 8312104, 8312105, 8312106, 8312107, 8312108, 8312109, 8312110, 8312111, 8312112, 8312113, 8312114, 8312115, 8312116, 8312117, 8312118, 8312119, 8312120, 8312121, 8312122, 8312123, 8312124, 8312125, 8312126, 8312127, 8312128, 8312129, 8312130, 8312131, 8312132, 8312133, 8312134, 8312135, 8312136, 8312137, 8312138, 8312139, 8312140, 8312141, 8312142, 8312143, 8312144, 8312145, 8312146, 8312147, 8312148, 8312149, 8312150, 8312151, 8312152, 8312153, 8312154, 8312155, 8312156, 8312157, 8312158, 8312159, 8312160, 8312161, 8312162, 8312163, 8312164, 8312165, 8312166, 8312167, 8312168, 8312169, 8312170, 8312171, 8312172, 8312173, 8312174, 8312175, 8312176, 8312177, 8312178, 8312179, 8312180, 8312181, 8312182, 8312183, 8312184, 8312185, 8312186, 8312187, 8312188, 8312189, 8312190, 8312191, 8312192, 8312193, 8312194, 8312195, 8312196, 8312197, 8312198, 8312199, 8312200, 8312201, 8312202, 8312203, 8312204, 8312205, 8312206, 8312207, 8312208, 8312209, 8312210, 8312211, 8312212, 8312213, 8312214, 8312215, 8312216, 8312217, 8312218, 8312219, 8312220, 8312221, 8312222, 8312223, 8312224, 8312225, 8312226, 8312227, 8312228, 8312229, 8312230, 8312231, 8312232, 8312233, 8312234, 8312235, 8312236, 8312237, 8312238, 8312239, 8312240, 8312241, 8312242, 8312243, 8312244, 8312245, 8312246, 8312247, 8312248, 8312249, 8312250, 8312251, 8312252, 8312253, 8312254, 8312255, 8312256, 8312257, 8312258, 8312259, 8312260, 8312261, 8312262, 8312263, 8312264, 8312265, 8312266, 8312267, 8312268, 8312269, 8312270, 8312271, 8312272, 8312273, 8312274, 8312275, 8312276, 8312277, 8312278, 8312279, 8312280, 8312281, 8312282, 8312283, 8312284, 8312285, 8312286, 8312287, 8312288, 8312289, 8312290

# CERTIFICATIONS



## BSI-ISO 9001: 2015



## BSI-ISO 14001: 2015



## BSI-ISO 45001: 2018



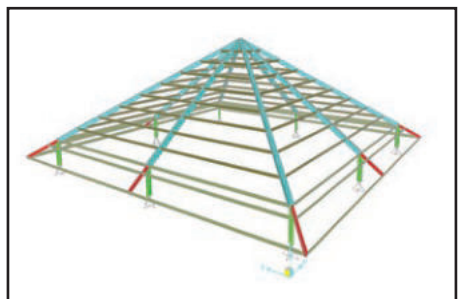
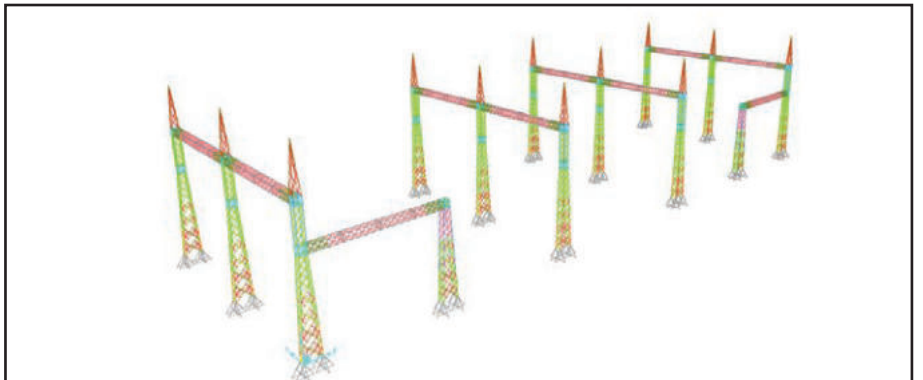
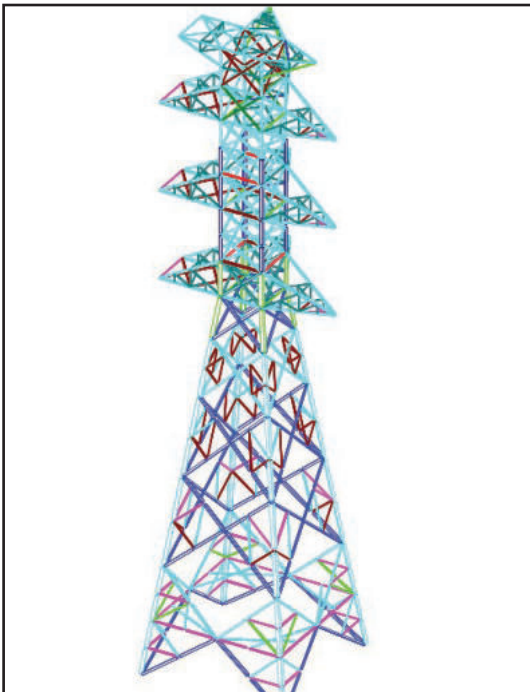
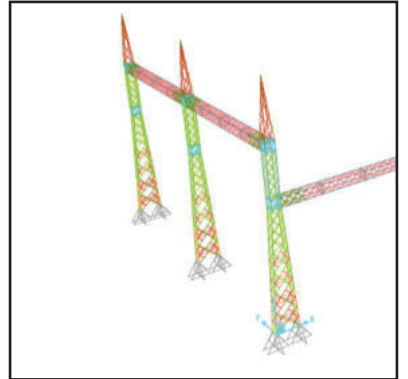
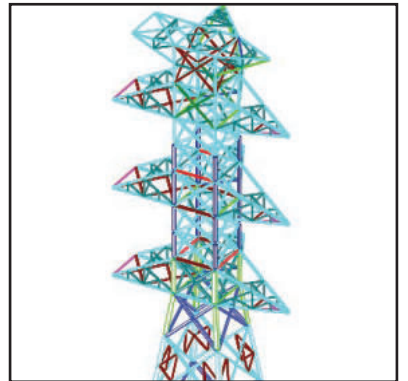
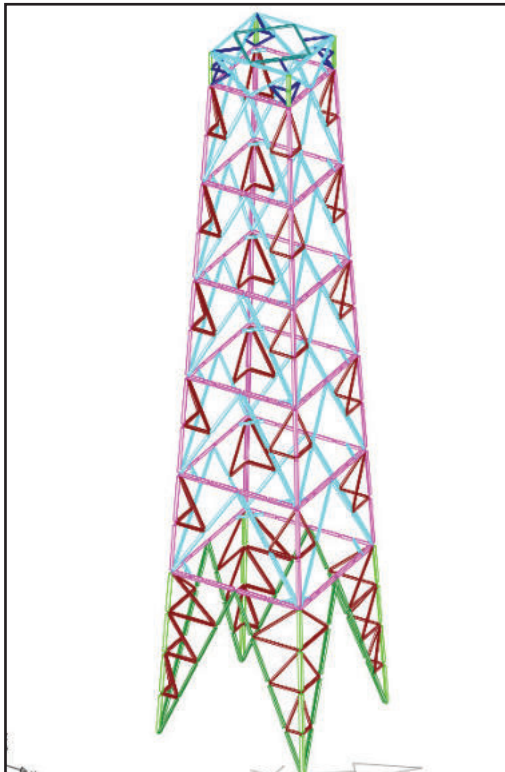
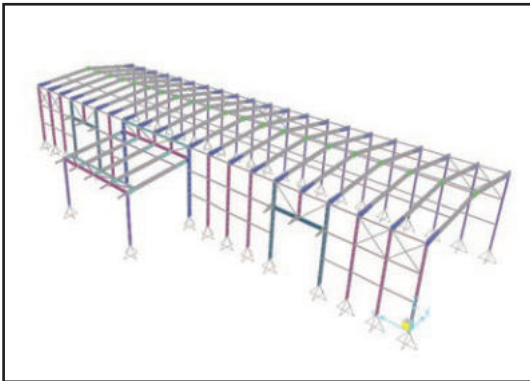
## APEI-LPJK: SKA Ahli Utama Teknik Tenaga Listrik (Electrical)



# ENGINEERING



Supported by expert engineers and detailer modelling CAD/CAM and nesting skilled operation to warrant accuracy and quality on project execution and fabrication process.







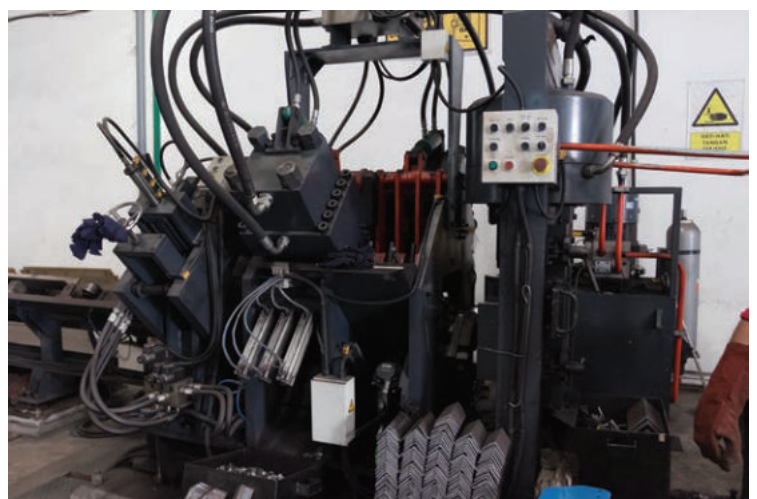
# FACILITIES AND MACHINERY

## FABRICATION CAPACITY, BASE ON FINISHED PRODUCT

Approx. 40 up to 50 Ton / Month for Plate Work Product (Tank, Hopper, Ducting, Cute, other plate work product)

Approx. 120 up to 150 Ton / Month for Light Steel Structure or Mechanical Steel Structure Product

Approx. 250 up to 300 Ton / Month for Medium Steel Structure Product



## WE MANAGED OUR WORKSHOP

- 1,260 M2 (Full Cover Area) APK+'s New Workshop located in SINAR BUDURAN III Industrial & Warehousing Complex.
- 630 M3 (Full Cover Area) Storage Warehouse for Setting Packing and Storage FINISH PRODUCT located in SINAR BUDURAN III Industrial & Warehousing Complex.
- 1,200 M2 (Full Cover Area) Building as Operational Office of APGroup and Workshop (960 M2) of APAJ located in + 200M of SINAR BUDURAN III Industrial & Warehousing Complex.
- 760 M2 APK+ 1st Workshop, located in + 30M from APGroup Operational Office (Full Cover Roofing)

# sahinler



## MULTIFUNCTION HYDRAULIC IRONWORK MACHINE WITH DOUBLE PISTON

Type : HKM 65  
Made in : Sahinler, Turkey  
Max Capacity : 26 x 20 mm  
Blade 380  
Shearing with angle : 120 x 12 mm  
Capacity : 65 ton



## MULTIFUNCTION HYDRAULIC IRONWORK MACHINE WITH DOUBLE PISTON

Type : HKM 85  
Made in : Sahinler, Turkey  
Max Capacity : 32 x 20 mm  
Blade 482  
Shearing with angle : 150 x 16 mm  
Capacity : 85 ton

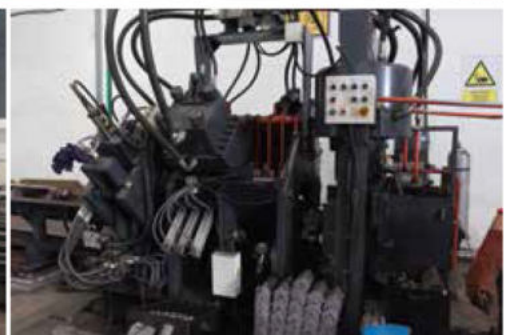


## MULTIFUNCTION HYDRAULIC IRONWORK MACHINE WITH DOUBLE PISTON

Type : HKM 115  
Made in : Sahinler, Turkey  
Max Capacity : 600 x 15 mm  
Blade 380  
Shearing with angle : 120 x 15 mm  
Capacity : 115 ton



# **EVERSHINING CNC MACHINE**



## **CNC MARKING PUNCHING AND SHEARING LINE FOR ANGLES MACHINE**

Model : JNC 1616  
Made in : Jinan Evershining Machine Co. Ltd  
Axis : 3  
Max Long Profile : 12m



# BOCHI

**佳密 CIAMIX<sup>®</sup>**  
Solusi Cerdas Investasi



**LATHE MACHINE**

Model : CS 6266C/2000  
Brand : Bochi



**LATHE MACHINE**

Model : SP 460T  
Year : 12-2017  
Made in : Yunan Machine Toolwork, China

**LVD**

**江苏中威重工机械有限公司**  
Jiangsu Zhongwei Heavy Industry Machinery Co., Ltd.



**HYDRAULIC PLATE PRESS BENDING MACHINE**

Made in LVD Belgium,  
Type : PPBL-H-135/30 ELGO 88  
Max Capacity : 135ton x 3050mm  
Max Gew : 6500kg  
Year : January 1995



**HYDRAULIC PLATE PRESS BENDING MACHINE**

Made Jiangsu, China  
Type : WC67Y-100x3200  
Max Capacity : 1000kn (Approx 100ton)  
Year : October 2001

**LATHE MACHINE**

Brand : Okuma

**HORIZONTAL BANDSAW MACHINE**

Model : SPT 330

Blade : 34mm x 1.1mm x 4100mm

**TURRET MILLING MACHINE**

Model : J412

Spindle Speed : 60Hz

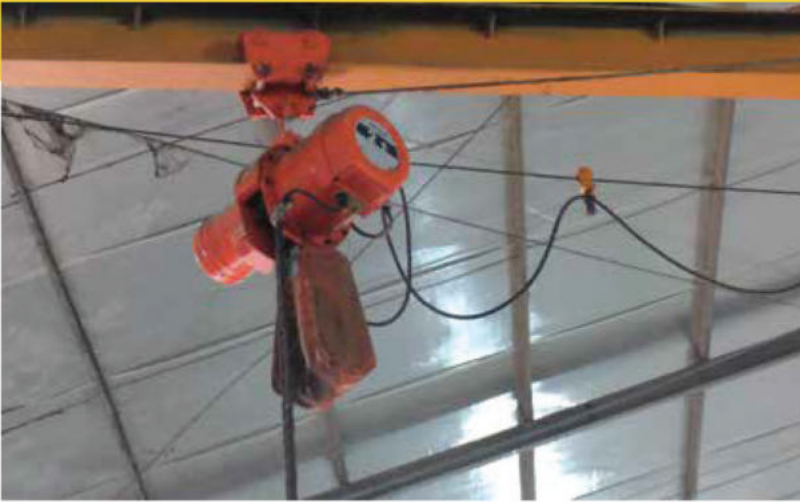
**TURRET MILLING MACHINE**

Model :

Spindle Speed :



## NITCHI ELECTRIC CHAIN HOIST



**NITCHI**

Brand : Nitchi  
Capacity : 2 ton  
Made in : Japan

## AUTOMATIC FLAME CUTTING MACHINE



**KOBEWEL**  
Japan

Model : BA-220  
Cutting Speed : 80-800mm/min

## HYDRAULIC GUILOTINES SHEARING CUT PLATE MACHINE



Thickness Capacity : 60mm  
Width Capacity : 3200mm  
Made in : Shanghai, China




**SMTCL**

Shenyang Machine Tool Co. Ltd


**RADIAL DRILLING MACHINE**

Model : 23050x16/1  
 Max Drilling Diameter : 50mm  
 Max Weight : 3500kg


**RADIAL DRILLING MACHINE**

Model : 23050x16/1  
 Max Drilling Diameter : 50mm  
 Max Weight : 3500kg


**ELECTRIC MOTOR ROLL PLATE BENDING MACHINE**

Max Thickness Capacity : 8mm  
 Max Weight Capacity : 3000mm


**ELECTRIC MOTOR ROLL PLATE BENDING MACHINE**

Max Thickness Capacity : 8mm  
 Max Weight Capacity : 1500mm

## ESAB BUDDY MIG 350i WELDER MACHINE

FACILITIES AND MACHINERY



Input Frequency : 50Hz  
Output Range : 35-380 A

## CIGWELD WELDSKILL 350 TRANSFORMER MIG WELDER



Input Frequency : 50Hz  
Output Range : 35-380 A

## NORITECH WELDER MACHINE



Input Frequency : 50Hz  
Output Range : 60-350 A





# PRODUCT AND SERVICES

As steel fabricator & EPC infrastructure having competency in energy and electrical power project, industrial, public utilities, and general construction wick available in indonesia.  
(Design, engineering, manufacture, construction, installation including civil works)

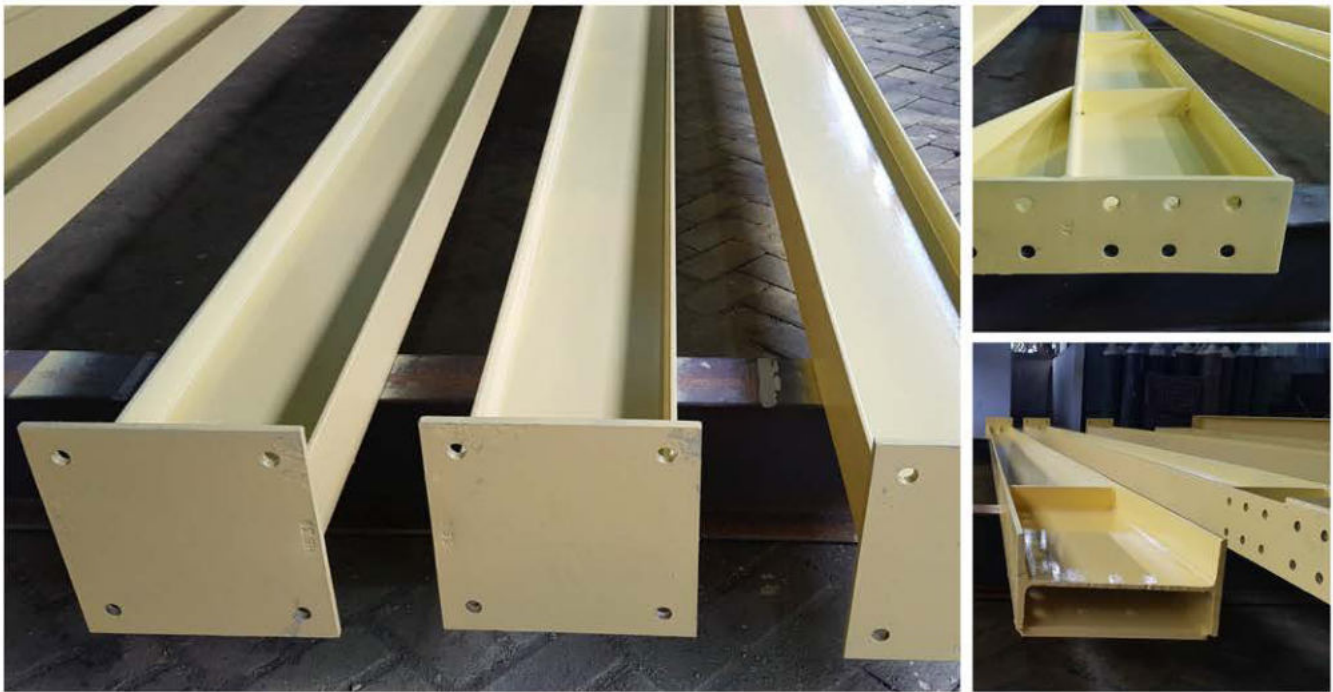


275kV/150kV GITET Conventional Substation

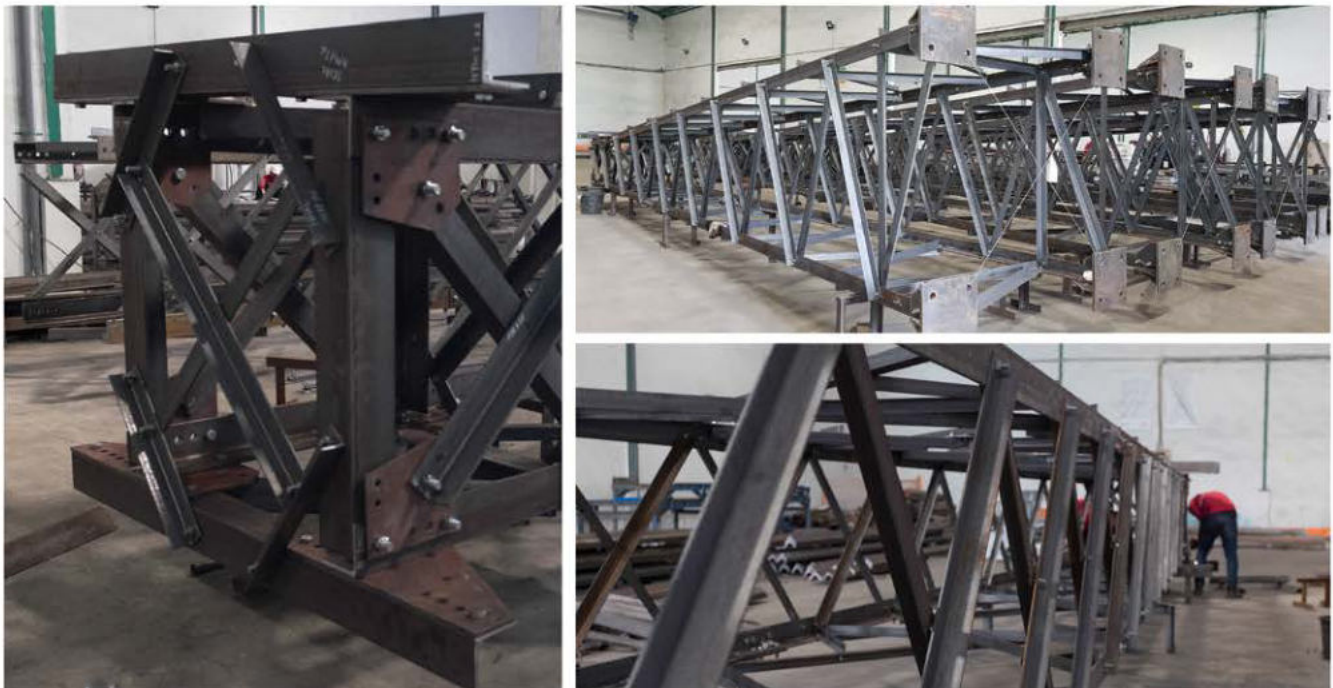


150kV GITET Conventional Substation





Medium steel structure for building and crane railing Beam.



Post and beam gantry 150kV and 275kV steel structure 150kV/275kV Gitet Wotu PLN UIP Sulawesi Selatan. (Documentation during trial assembly check)





70kV-150kV-275kV-500kV steel structure Hv/EHV equipment support.  
(Documentation ABB open book project for PLN)



Customize expansion bolt until maximum diameter 150mm, length maximum 3m, material (ST41 up to ST60), Carbon Steel (SUS 304 up to 316), Stainless Steel. Various customized anchor (S45C) / expansion bolt with grade ST41/ ST60 carbon steel , an galvanizing ) or SUS304.





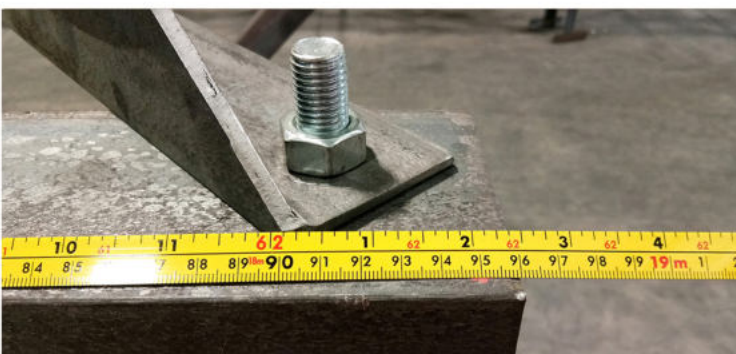
# QUALITY CONTROL







Every details on starting of incoming material, during production process and finished product always monitored and check recorded by Quality Control Department.

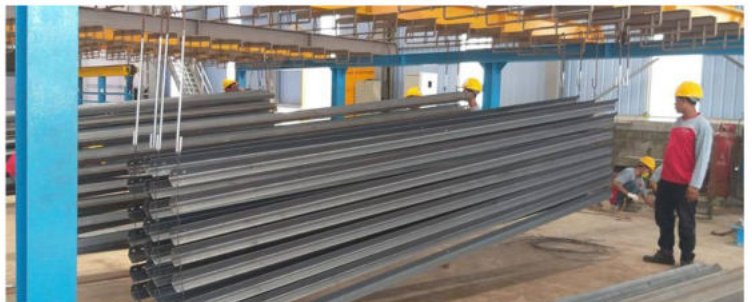




# SUPPORTING FACILITIES AND MAJOR PARTNERS



## PT. BONDI SYAD MULIA - HOT DIP GALVANIZER



**PT. Bondi Syad Mulia** started production in 2017 which marketed using the name mulcindo galvanizing, and change the brand name to bondi galvanizing in 2018. Bondi galvanizing is consistently applying quality management system ISO 9001:2015, following the hot dip Galvanizing production standart of SNI 07-7033-2004 from indonesia industrial Departement and stictly in accordance with ASTM A-123.

Galvanizing is found almost every major application and industry where iron or mild steel used. Hot Dip Galvanizing has had a proven history of commercial success as a method of crrosion protection in numerous applications worldwide.

### **Kettle Dimension**

Surabaya Plant : L10.8 x W 1.6 x D 3.0 M | Gresik Plant : L 7.0 x W 1.6 x D 3.0 M

### **Hot Dip Capacity :**

Surabaya Plant : 3.500 MT/ Month | Gresik Plant : 2.500 MT/ Month



## PT. USAHA BAKTI PERKASA - HOT DIP GALVANIZER



Location : Jalan Lingkar Timur Kemiri, Sidoarjo. East Java - Indonesia

Workshop area : 17.165 m<sup>2</sup>

Hot Dip Capacity : 1200 ton/month

Sun Blasting Capacity : 350 ton/month

Kettle Bath Furnished Dimention : 7m x 1,2m x 2m

ISO : 9001-14001-45001:2015.

## FINISH PRODUCT WAREHOUSE



Space area : 630 m<sup>2</sup>

Facilities : Forklift 3 ton and Forklift 5 ton



## MAIN WORKSHOP



Location : Jalan Lingkar Timur Siwalan Panji, Sidoarjo. East Java - Indonesia

## SUPPORTING WORKSHOP



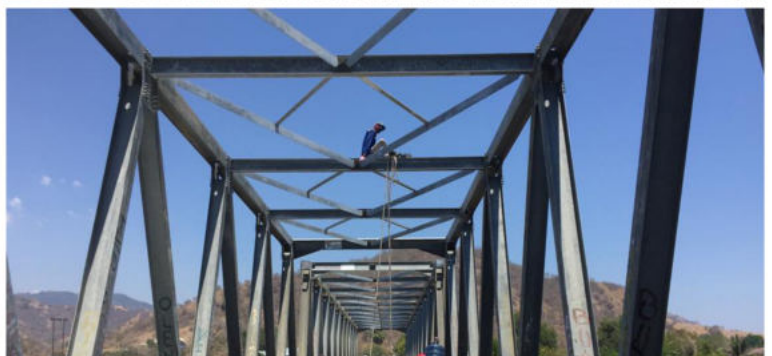
Space area : 630 m2

Facilities : Forklift 3 ton and Forklift 5 ton





# PROJECT DOCUMENTATION



Various steel structure works in telecommunication/navigation energy and public transportation utilities.





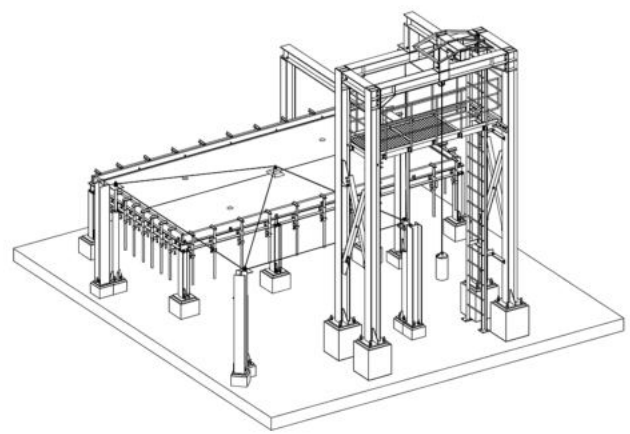
2 Storey area buildings at PT PLN UIP JBTB - Ketintang Surabaya, 2020.



Mosque steel structure roof and hall (Steel structure - PLN UIP JBTB, Ketintang Surabaya, 2020)



Ladder Platform for Solar PV Module instalation on rooftop - PT. Greenfield, Malang.

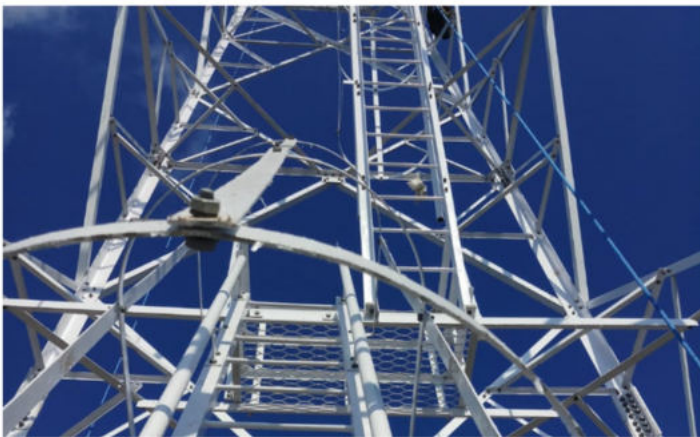


Trial Assy. Test Band Facility - PT. Utomo Deck Metal





Jembatan flores 1 x40m & 1x55m reinforcement trust bridge ( design & fabrication & Construction supervision) Satker PU NTT.



Tower Rambu Suar Navigation Tower Maluku and NTT. (Height 20m & 30m)



Design supply and fabrication and construction installation 150kV (7 bays) New Cianjur Substantion c/w 2 incomer dead end T/L tower and Mechanical electrical instalation.

# CLIENT AND PROJECT OWNER- END USER



## 1. ENERGY SECTOR



PT. CITRA  
RIANTARA SEJAHTERA



PT. BARUGA ASRINUSA  
DEVELOPMENT



PT KELINCI MAS UNGGUL



PT.  
PURNAMA  
INDONESIA



PT. JABBARU ELEKTRODAYA  
TELEKOMUNIKA

# CLIENT AND PROJECT OWNER - END USER

## 2. TELECOMMUNICATION SECTOR



Kementerian Perhubungan  
Republik Indonesia

## 3. PUBLIC UTILITY INFRASTRUCTURE SECTOR



KEMENTERIAN PEKERJAAN UMUM  
DAN PERUMAHAN RAKYAT



PT. TRISAKTI CIPTA  
NUSANTARA

## 4. INDUSTRIAL SECTOR











## HOW TO REACH US MARKETING & SALES

Office +62 31 99712799  
Fax +62 31 99713768  
Email [info@apkplus.co.id](mailto:info@apkplus.co.id)  
Website [www.apkplus.co.id](http://www.apkplus.co.id)



### MANAGEMENT OFFICE

Jl. Lingkar Timur, Pergudangan Platinum  
Blok B1, Siwalanpanji, Buduran - Sidoarjo.  
61252, Jawa Timur - Indonesia.  
+62 31 99712799  
+62 31 99713768 (fax)



### WAREHOUSE

Jl. Lingkar Timur, Pergudangan  
Sinar Buduran III, Blok A26,  
Siwalanpanji, Buduran - Sidoarjo.  
61252, Jawa Timur - Indonesia.



### WORKSHOP I

Jl. Lingkar Timur, Pergudangan Platinum  
Blok C9, Siwalanpanji, Buduran - Sidoarjo.  
61252, Jawa Timur - Indonesia.



### WORKSHOP II

Jl. Lingkar Timur, Pergudangan  
Sinar Buduran III, Blok A46-47,  
Siwalanpanji, Buduran - Sidoarjo.  
61252, Jawa Timur - Indonesia.



Juanda International Airport (± 30 minutes by car)  
Tanjung Perak Harbour (± 1 hour by car)

